

Product Advantage

For double swing doors
Suitable for 90 or 180 degrees double swing doors

Relock function
When the lock is unlocked, it will lock the door automatically according to the program.

Smart circuit design
With time delay function, door signal output and lock signal output

All-metal lock body
With integral profiles and precise work, this lock is stronger and more durable.

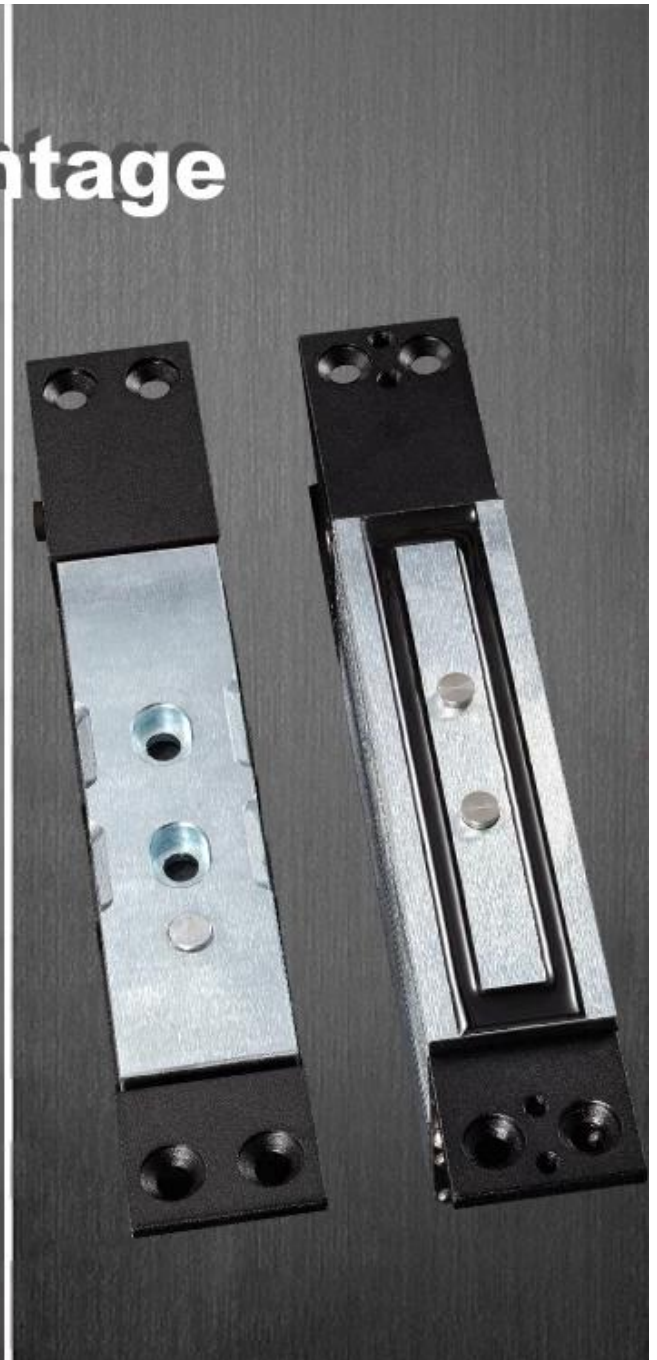
Ultra durable electromagnetic design
Professional and durable electromagnetic design with over 500,000 times qualified test.

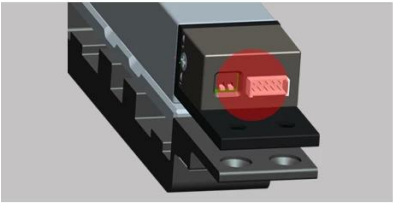
One-piece and small size
One-piece design and small size, which will be easy to install to any kinds of door frame

With both magnetic and latch design
By using electromagnetic force and latch design, the holding force of this shearing lock can achieve up to 1200kg

Armature plate with guide groove
With guide grooves at both sides of the armature plate

Door/lock status sensor
A set of NO/COM door signal output contact and a set of NO/NC/COM lock signal output contact



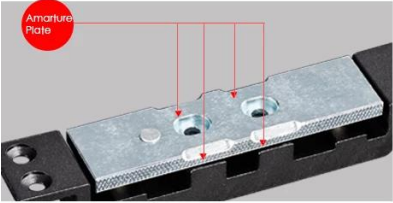
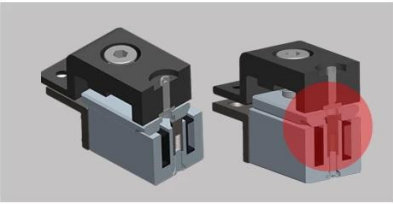


Intelligent circuit

Time Delay&Double Signals output

Lock It Twice

when there is inappropriate locking,the lock will lock it again,guaranteeing for locking successfully



Amarture Plate

Leaning guide groove on the side of amature plate,convenient for locking

Metal-Made Lock

Metal-made structure makes it sturdy& durable

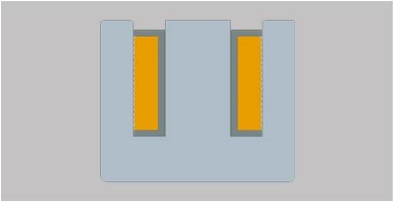
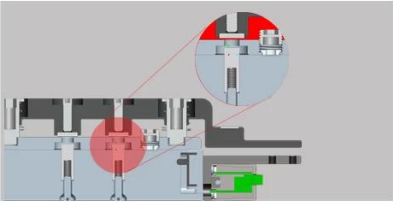


Integrated&Miniature Design

Integrated and miniature design,- making it convenient for installation on any kinds of door frame

Magnetism&Bolt

Adopt electromagnetic force and bolt design,making it reaches 1200kgs holding force,more safer.

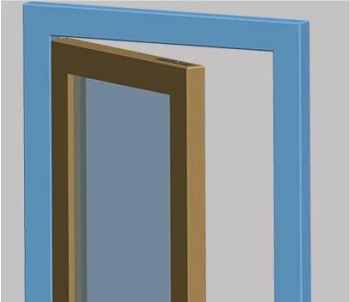
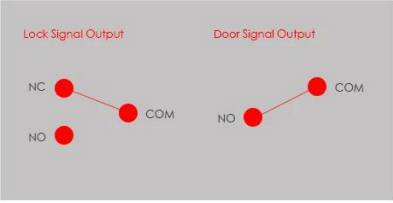


Durable Electromagnetism

Adopt durable electromagnetism design,sucessful 500000 operations(it can work for 5-10 years based on test)

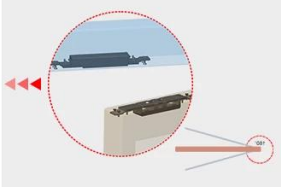
Door/Lock Double Signal Contact

NO/COM door signal output,NO/NC/COM lock signal output,satisfy with high-level security requirement in access control



Suitable For Two-Way Opening

Suitable for 90 degree or 180 degree opening directions



□□□□

□□□DH-2400SL

□□□□2600Lbs□1200kg□

□□182L X 30W X 25D□mm□

□□□□182L X 30W X 23.6D□mm□

□□□DC 12V

□□□□□850mA

□□□□□400mA

□□□□□0/5/10 / 15sec□

LED□□□□□□□□□□□□□□

□□□

□□□□□□ □□□90□□180□□□□□□□

□□□□□□□□□□□□□□□□□□□□

□□□□□□□□□□□□□□□□□□□□

□□□□□□ □□□□□□□□□□□□□□□□

□□□□□□□□□□□□□□□□□□□□500,000□□□□□□□

□□□□□□□□□□□□□□□□□□□□□□□□

□□□□□□□□□□□□□□□□□□□□□□□□1200kg

□□□□□□□□□□□□□□□□□□□□

□/□□□□□□□□□NO / COM□□□□□□□□□□NO / NC / COM□□□□□□□

CONTACT US



Sincerely for your service

You are welcome to come to consult

Contact: Yimo Yang

Cellphone/Wechat/Whatsapp: +86 13612936220

Skype: udohow3

Email: udohow1@udohow.com

Web: www.udohow.com

HOME