

DH-2400SL is a kind of **shear lock**. by using the principle of electromagnetic force to attract the armature plate, and then stuck the two fixed legs into the holes on the armature plate. With combination of the power of electromagnetic force and holding force of the fixed legs, the shear lock can create a very large shearing force.

# Product Advantage

## For double swing doors

Suitable for 90 or 180 degrees double swing doors

## Relock function

When the lock is unlocked, it will lock the door automatically according to the program.

## Smart circuit design

With time delay function, door signal output and lock signal output

## All-metal lock body

With integral profiles and precise work, this lock is stronger and more durable.

## Ultra durable electromagnetic design

Professional and durable electromagnetic design with over 500,000 times qualified test.

## One-piece and small size

One-piece design and small size, which will be easy to install to any kinds of door frame

## With both magnetic and latch design

By using electromagnetic force and latch design, the holding force of this shearing lock can achieve up to 1200kg

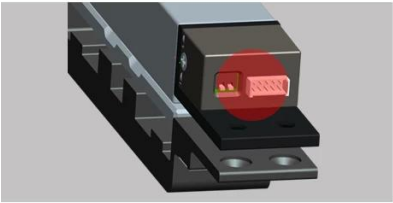
## Armature plate with guide groove

With guide grooves at both sides of the armature plate

## Door/lock status sensor

A set of NO/COM door signal output contact and a set of NO/NC/COM lock signal output contact

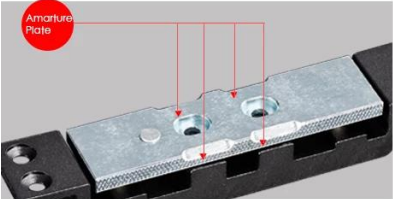
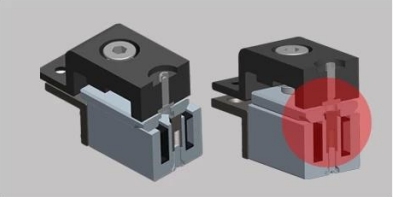




### Intelligent circuit

Time Delay&Double Signals output

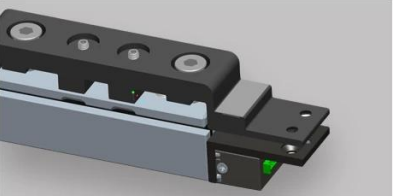
**Lock It Twice**  
when there is inappropriate locking,the lock will lock it again,guaranteeing for locking successfully



### Amarture Plate

Leaning guide groove on the side of amarture plate,convenient for locking

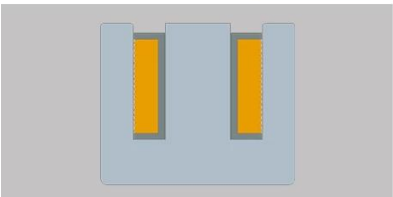
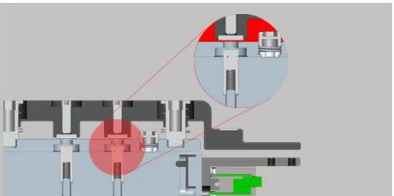
**Metal-Made Lock**  
Metal-made structure makes it sturdy& durable



### Integrated&Miniature Design

Integrated and miniature design,- making it convenient for installation on any kinds of door frame

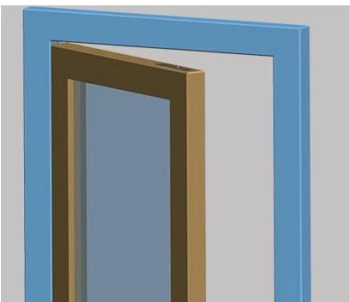
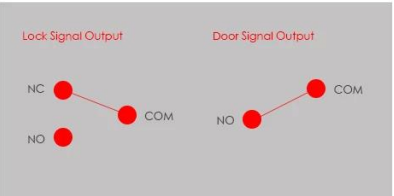
**Magnetism&Bolt**  
Adopt electromagnetic force and bolt design,making it reaches 1200kgs holding force,more safer.



### Durable Electromagnetism

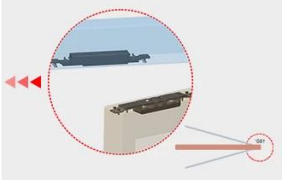
Adopt durable electromagnetism design,sucessful 500000 operations(it can work for 5-10 years based on test)

**Door/Lock Double Signal Contact**  
NO/COM door signal output,NO/NC/COM lock signal output,satisfy with high-level security requirement in access control



### Suitable For Two-Way Opening

Suitable for 90 degree or 180 degree opening directions



## **Technical Parameter:**

Model No.: DH-2400SL

Holding Force: 2600Lbs(1200kg)

Lock: 182L X 30W X 25D(mm)

Armature Plate: 182L X 30W X 23.6D(mm)

Power supply: DC 12V

Operation Current: 850mA

Holding Current: 400mA

Time Delay: 0/5/10/15sec.

LED Red shows locked; Green shows unlocked

## **Advantage:**

**For double swing doors:** Suitable for 90 or 180 degrees double swing doors;

**Relock function:** When the lock is unlocked, it will lock the door automatically according to the program.

**Smart circuit design:** With time delay function, door signal output and lock signal output

**All-metal lock body:** With integral profiles and precise work, this lock is stronger and more durable.

**Ultra durable electromagnetic design:** Professional and durable electromagnetic design with over 500,000 times qualified test.

**One-piece and small size:** One-piece design and small size, which will be easy to install to any kinds of door frame

**With both magnetic and latch design:** By using electromagnetic force and latch design, the holding force of this shearing lock can achieve up to 1200kg

**Armature plate with guide groove:** With guide grooves at both sides of the armature plate;

**Door/lock status sensor:** A set of NO/COM door signal output contact and a set of NO/NC/COM lock signal output contact

**CONTACT US**



## **Sincerely for your service**

**You are welcome to come to consult**

---

**Contact:** Yimo Yang

**Cellphone/Wechat/Whatsapp:** +86 13612936220

**Skype:** udohow3

**Email:** [udohow1@udohow.com](mailto:udohow1@udohow.com)

**Web:** [www.udohow.com](http://www.udohow.com)

**HOME**