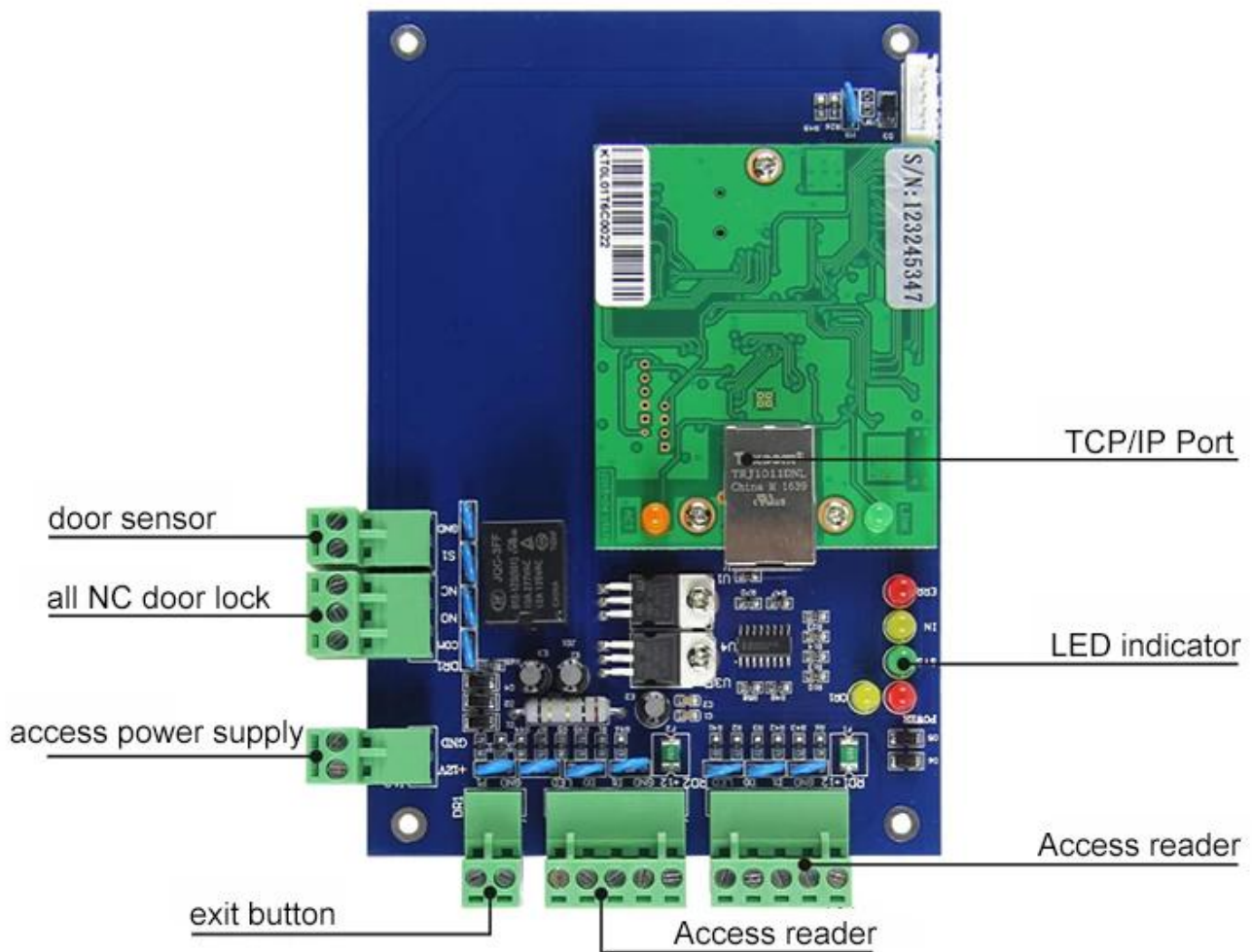


DH7001 TCP network access control panel is a device combined the most advanced chip technology and mechanics of communication. User can connect the controller with one reader for entry and one button for exit; also it allows connecting one reader for entry and one reader for exit to realize safer door access control request. Whenever required, the data stored in the controllers is transferred to the computer and activity reports are printed. Each controller works independently and keeps its own database.

| Parameter                          | Single Door Control Panel   | Multi Door (2) Control Panel  | Multi Door (4) Control Panel  |
|------------------------------------|---|---|---|
| Model                              | DH-7001   | DH-7002   | DH-7004   |
| Communication                      | TCP/IP 10M/100M adaotive  | TCP/IP 10M/100M adaotive  | TCP/IP 10M/100M adaotive  |
| Description                        | Control 1 door, get in and out door by swiping card, of get in by swiping card and get out door by button | Control 2 door, get in and out door by swiping card, of get in by swiping card and get out door by button | Control 4 door, get in the door by swiping card, and get out door by button |
| Size of PCB board                  | 160*106mm   | 160*106mm   | 160*106mm   |
| Size of Case                       | 273*228*65mm  |   |   |
| Power Supply                       | 12VDC 4-7A  |   |   |
| Power Consumption of Circuit Board | Less than 100mA   |   |   |
| Input Format of Reader             | Wiegand 26 (All card reader with compatible protocol. such as Motorola,HID,EM,,Mifare one etc)            |   |   |
| Quantity of Readers                | 2 pcs   | 4 pcs   | 4 pcs   |
| Door Controlled                    | 1 door  | 2 door  | 4 door  |



**Features:**

Support offline work, TCP/IP communication; allow direct connection with computer via network cable. Support LAN, remote control by PC software.

Compared to standard standalone access controller, this device separates the reader and the controller to individual parts so to realize higher safety request of your customer.

This device is compatible with all RF reader which is with any type of Wiegand standard communication format available in the market.

Wrong connection of reader or data cable will not destroy the device or unlock the door illegally.

Effect inhibition of static electricity and surge from input and feedback interference from electronic locks

All-in-one-card management system: normal shift and mult shifts time attendancemanagement system; fixed ration dining management system; meeting attendancemanagement system; online patrol management system and security alarmmanagement system.

01

TCP/IP port



02

LED indicator



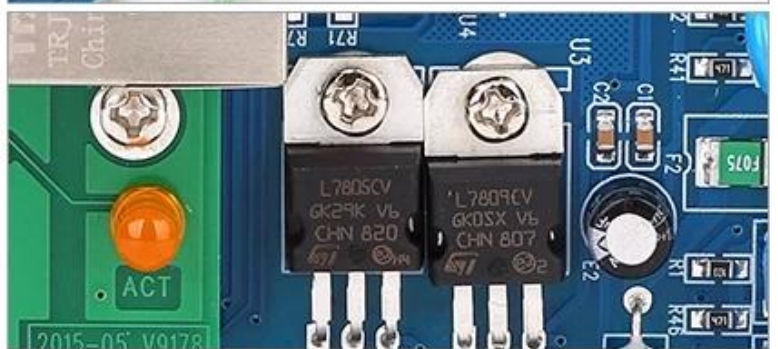
03

Fix wires by screws



04

Original components





**Kindly remind:**

All network control board must configure with access power supply.  
1 board for 1 power supply

-   
RFID Reader
-   
Exit Button
-   
Electric Lock
-   
Power Supply
-   
Alarm and Fire Control  
Expansion Panel
-   
Alarm



Access control management software also includes all-in-one-card management system such as normal shift and multi-shifts time attendance management system; fixed ration dining management system; meeting attendance management system.

Conventional Function: offline operation; real time supervision; photo display; mass storage; flexible user privilege setup; remote unlocking; multi-user supervision; quick setting; convenient checking and query; revisable and printable report form; report form; report can be exported to excel file; card+password unlocking; alarm for long time unclosing; alarm for invalid card swiping; first card unlocking; alarm for illegal break in; unlocking at definite time; e-map etc.